

NDUFS6 Antibody (Center)
Affinity Purified Rabbit Polyclonal Antibody (Pab)
Catalog # AP19818c**Specification**

NDUFS6 Antibody (Center) - Product Information

Application	WB,E
Primary Accession	O75380
Other Accession	O4R5X8 , NP_004544.1
Reactivity	Human
Predicted	Monkey
Host	Rabbit
Clonality	Polyclonal
Isotype	Rabbit IgG
Antigen Region	28-56

NDUFS6 Antibody (Center) - Additional Information**Gene ID** 4726**Other Names**

NADH dehydrogenase [ubiquinone] iron-sulfur protein 6, mitochondrial, Complex I-13kD-A, CI-13kD-A, NADH-ubiquinone oxidoreductase 13 kDa-A subunit, NDUFS6

Target/Specificity

This NDUFS6 antibody is generated from rabbits immunized with a KLH conjugated synthetic peptide between 28-56 amino acids from the Central region of human NDUFS6.

Dilution

WB~~1:1000

E~~Use at an assay dependent concentration.

Format

Purified polyclonal antibody supplied in PBS with 0.09% (W/V) sodium azide. This antibody is purified through a protein A column, followed by peptide affinity purification.

Storage

Maintain refrigerated at 2-8°C for up to 2 weeks. For long term storage store at -20°C in small aliquots to prevent freeze-thaw cycles.

Precautions

NDUFS6 Antibody (Center) is for research use only and not for use in diagnostic or therapeutic procedures.

NDUFS6 Antibody (Center) - Protein Information**Name** NDUFS6

Function Accessory subunit of the mitochondrial membrane respiratory chain NADH dehydrogenase (Complex I), that is believed not to be involved in catalysis. Complex I functions in the transfer of electrons from NADH to the respiratory chain. The immediate electron acceptor for the enzyme is believed to be ubiquinone.

Cellular Location

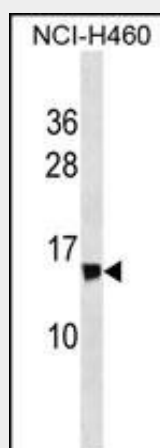
Mitochondrion inner membrane; Peripheral membrane protein; Matrix side

NDUFS6 Antibody (Center) - Protocols

Provided below are standard protocols that you may find useful for product applications.

- [Western Blot](#)
- [Blocking Peptides](#)
- [Dot Blot](#)
- [Immunohistochemistry](#)
- [Immunofluorescence](#)
- [Immunoprecipitation](#)
- [Flow Cytometry](#)
- [Cell Culture](#)

NDUFS6 Antibody (Center) - Images



NDUFS6 Antibody (Center) (Cat. #AP19818c) western blot analysis in NCI-H460 cell line lysates (35ug/lane). This demonstrates the NDUFS6 antibody detected the NDUFS6 protein (arrow).

NDUFS6 Antibody (Center) - Background

This gene encodes a subunit of the NADH:ubiquinone oxidoreductase (complex I), which is the first enzyme complex in the electron transport chain of mitochondria. This complex functions in the transfer of electrons from NADH to the respiratory chain. The subunit encoded by this gene is one of seven subunits in the iron-sulfur protein fraction. Mutations in this gene cause mitochondrial complex I deficiency, a disease that causes a wide variety of clinical disorders, including neonatal disease and adult-onset neurodegenerative disorders.

NDUFS6 Antibody (Center) - References

Saito, A., et al. J. Hum. Genet. 54(6):317-323(2009)
Martins-de-Souza, D., et al. J Neural Transm 116(3):275-289(2009)
Wang, L., et al. Cancer Epidemiol. Biomarkers Prev. 17(12):3558-3566(2008)
Starr, J.M., et al. Mech. Ageing Dev. 129(12):745-751(2008)
Harris, S.E., et al. BMC Genet. 8, 43 (2007) :